



market leader in basement construction

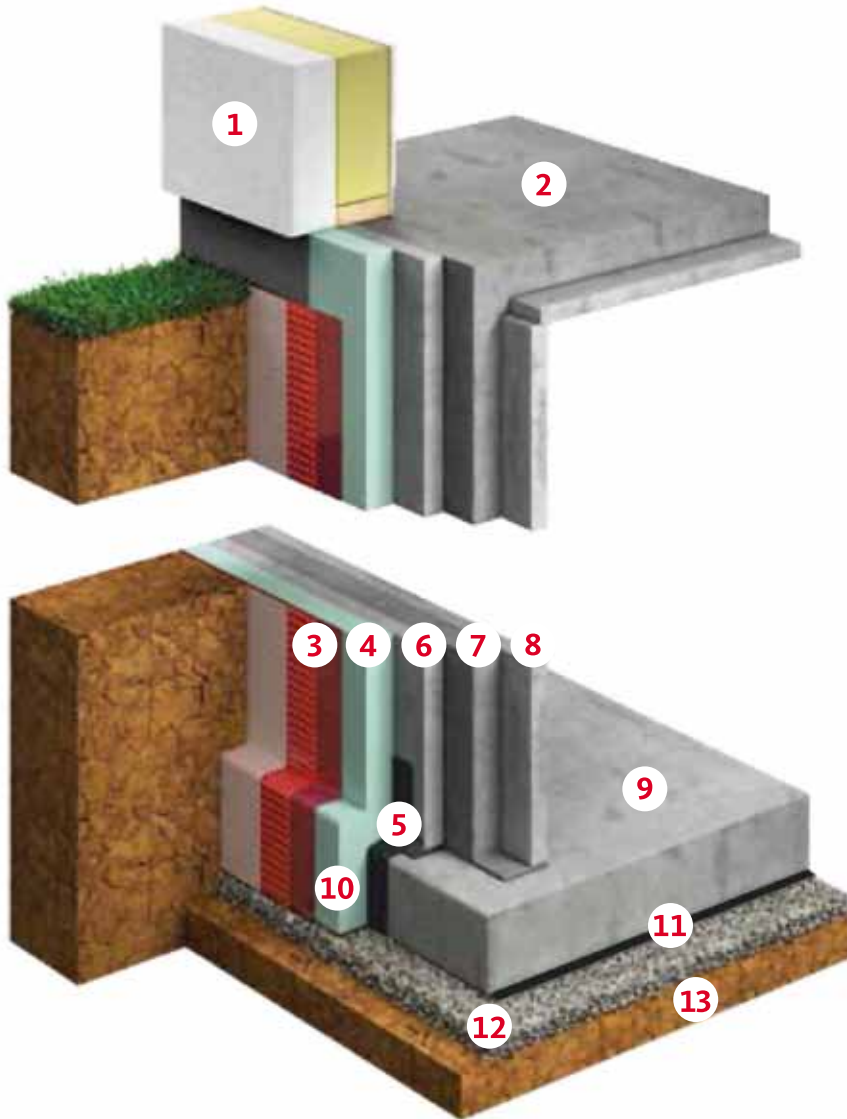
Ich schwimme - AquaSafe®-Keller - machen es möglich

A photograph of a modern, two-story building with a white facade and red accents. The building has several windows and a red door. A sign above the entrance reads 'Ich schwimme - AquaSafe®-Keller - machen es möglich'. The building is situated on a grassy area with a swimming pool in the foreground. The image is overlaid with a large, stylized red arrow pointing to the left.

**AQUASAFE® BY GLATTHAAR KELLER
OUR WATERPROOFING SOLUTION
FOR YOUR BASEMENT**

NOTE: All images are examples of our services.

Overview of our AquaSafe® basement construction



- 1 External house wall
- 2 Basement ceiling/floor slab¹
- 3 Back fill protection¹
- 4 External Insulation²
- 5 External waterproof tanking¹
- 6 External concrete shell (Twin Wall)¹

- 7 In-situ concrete¹
- 8 Internal concrete shell (Twin Wall)¹
- 9 Basement Slab¹
- 10 External insulation on basement walls and on edge of Basement Slab. Insulation below Basement Slab optional²

- 11 Tanking below Basement Slab¹
 - 12 Concrete blinding²
 - 13 Ground
- ¹ Standard
² Optional at additional costs



AquaSafe® by Glatthaar Keller

Protect your home from moisture and your wallet from the risk of costly restoration work due to water damage, with our 100% waterproof basement.

The advantages

Our specialist AquaSafe® waterproofing ensures your basement is impermeable to moisture. It even floats! There are many advantages to our AquaSafe® basement, including:

- It is a tried and tested construction that will remain 100% waterproof
- It uses a time and cost-saving construction process
- Waterproofing protects against soil moisture, moderate water pressure from backwater and high levels of groundwater.
- It can be combined with other Glatthaar products, for maximum thermal insulation, providing a warm and comfortable living space

The AquaSafe® basement: so watertight that it floats

Our fully equipped, 313-tonne, 100% waterproof AquaSafe® demonstration basement has been floating in a three meter deep moat for over a decade at our site in Schramberg Germany. It is a true testament to the durability of our Aquasafe® waterproofing.





market leader in basement construction



Mail: info@glatthaar.co.uk

Tel.: + 44 (0) 1932 344 454

Twitter: [glatthaar_uk](https://twitter.com/glatthaar_uk)

Instagram: [#glatthaar_uk](https://www.instagram.com/glatthaar_uk)

LinkedIn: [Glatthaar Keller UK](https://www.linkedin.com/company/glatthaar-keller-uk)

Glatthaar Keller Ltd

PO BOX 631

Addlestone – Surrey

KT15 9BG

Status: GBR-2022-02 / Print: 2022-02