

# Glatthaar – the market leader in basement construction.

## Off-site manufacturing (OSM)

Fully automated  
computer controlled production ...



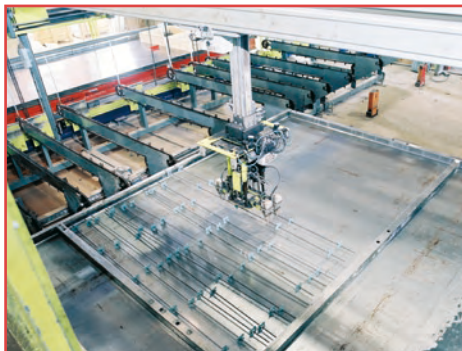
1 CAD led process ...



2 Setting out panel ...



3 Various components can be included (windows, pipes, sockets, etc.) ...



4 Placing reinforcement ...



5 Automated concreting ...



6 External wall – joining of internal and external leaves ...



7 Heated curing chamber ...

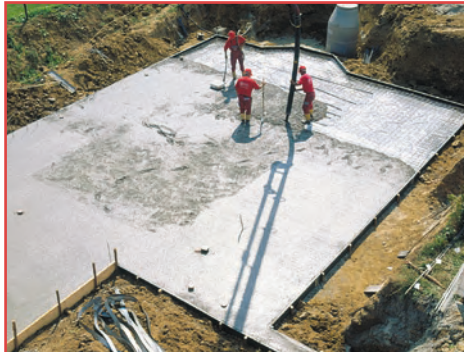


8 Ready for site delivery ...

# Glatthaar – the market leader in basement construction.

## On site construction

A Glatthaar Basement ...  
in days, not months.



1 Basement slab cast in-situ ...



2 External Twin Walls erected ...



3 Internal Walls erected ...



4 Temporary ground floor support  
placed in position ...



5 Precast ground floor slab  
installed ...



6 Staircase with winders placed  
in position ...



7 Concreting Twin Wall cavities  
and ground floor slab ...



8 Complete –  
ready for superstructure.