

The market leader
NO.1
in basement construction

glatthaar fertiggkeller°

The market leader
NO.1
in basement construction

glatthaar fertiggkeller°

The market leader
NO.1
in basement construction

glatthaar fertiggkeller°

Customer satisfaction is paramount



Right from the beginning, we plan in consultation with the customer.

By being customer focused and proactive we aim to achieve the highest quality products and service on the market. Using feedback from our 2,500 clients every year we strive to constantly improve our service. Good communication is vital to a successful project.

The Glatthaar service begins with full consultation during the planning phase and continues through to completed basement. After completion we support our clients with a comprehensive after sales service.

With our **AquaSafe®** and **ThermoSafe®** Basements we can deal with all kinds of projects to the same high standards: Sites with high water tables, sloping sites, even building basements in earthquake zones are routinely dealt with by our expert team. Our expertise and experience allows us to find a solution for each individual problem.



Off-site manufacturing

Our products are manufactured using precision engineering in modern high-tech production facilities. Every basement is unique and manufactured to your exact specification.

Our extensive experience and quality management techniques, which start at production and continue through to completion, guarantee the highest quality results. We achieve this through internal and external quality control.

Prefabrication results in reduced construction times which are less dependant upon weather conditions. This in turn produces the economical, high quality Glatthaar product.

Glatthaar quality products are manufactured in our modern production facilities



The benefits at a glance

- Dimensional accuracy through computer-controlled production
- Off-site manufacturing enables construction regardless of weather conditions
- Prefabrication enables fast, cost effective construction
- Internal and external quality control guarantee the highest standards of quality

Contact

Glatthaar UK

glatthaar-fertiggkeller ltd. PO Box 631 · Addlestone KT15 9BG Surrey
Phone +44 1932 344454
Fax +44 1932 352582
E-Mail info@glatthaar.co.uk

Glatthaar Germany

glatthaar-fertiggkeller gmbh Im Moos 17 D-78713 Schramberg
Phone +49 7402 9294-831
Fax +49 7402 9294-931
E-Mail info@glatthaar.com

Glatthaar basements – an innovative concept and state of the art technology



313 tons floating Glatthaar show house

www.glatthaar.co.uk

www.glatthaar.co.uk

www.glatthaar.co.uk

Award winning company



Glatthaar management from left to right: Reiner Heinzlmann, Joachim Glatthaar, founder of the company and Dirk Wetzel



For developing the **AquaSafe®** and **ThermoSafe®** Basements we were awarded the prestigious Creative Award in 2005. Producing and installing over 2,500 basements every year we are the market leader in basement construction.

For over 25 years we have specialised in basement construction, continually developing

our products and services. We have concentrated on developing functional basements which add value to a property.

Our number one priority is consistent quality with 100% customer satisfaction, this is why every Glatthaar basement carries the RAL quality hallmark. This hallmark guarantees peace of mind for every Glatthaar client

– the highest quality comes as standard.

The principles upon which we have built our business are 100% customer satisfaction achieved by innovative product development and continual employee training. We only ever use our own highly trained, enthusiastic employees – never subcontractors!

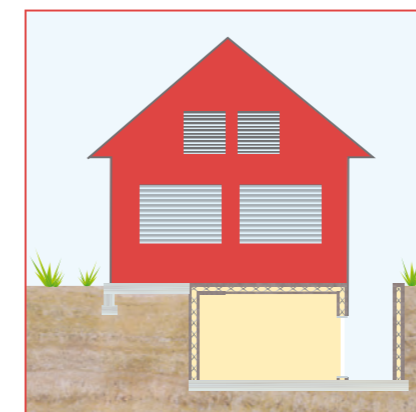
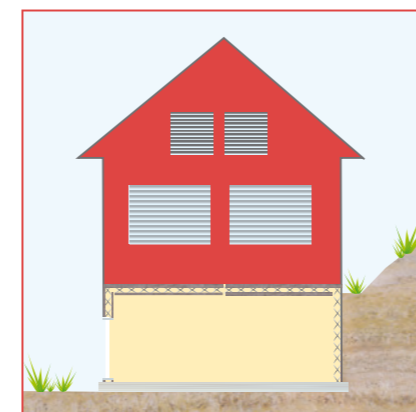
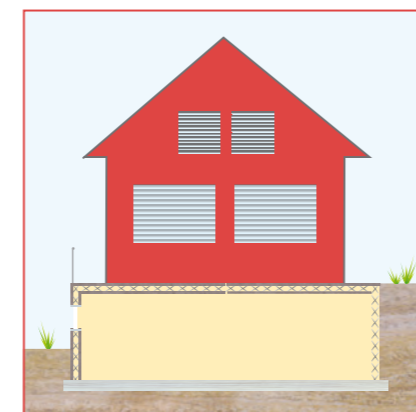
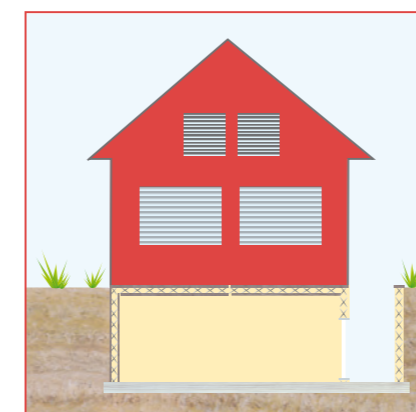
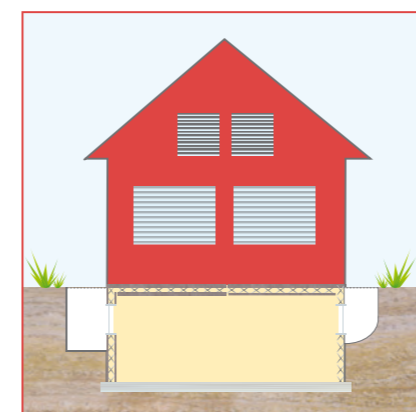
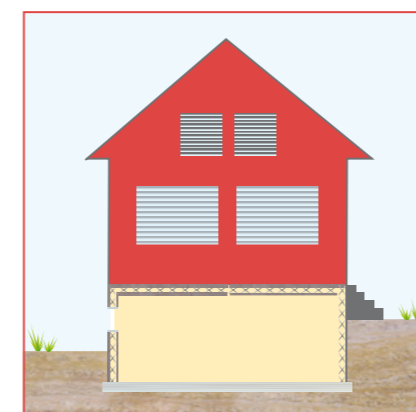
Why a basement?

With a basement additional storage and living space is created – extra bedroom, children's playroom, bathroom, gym, home cinema. Therefore the value of the house can increase significantly.

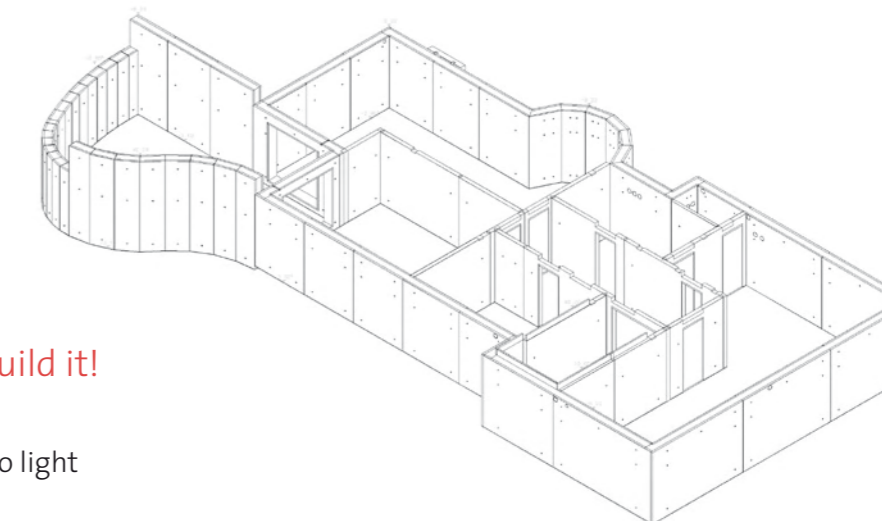
A basement is an eco-friendly and often the most cost effective solution to gain more space

on the same footprint where a plot is restricted by storey height and footprint. A hill-side/sloping site is an ideal solution for a basement. Plenty of natural light can be gained by using sunken patios and light wells achieving quality lower ground floor living with every basement.

Where poor soil conditions exist and expensive foundations, such as pile foundations, are being considered, a basement can provide a cost effective solution by providing not only the foundations for the house but also an additional floor. Furthermore a partial basement can be considered to reduce costs.



The possibilities ...



You think of it, we build it!

- French doors leading into light wells/small courtyards
- External basement entrance
- Windows looking into light wells to maximise natural light
- Curved walls, swimming pools within the basement, split levels
- Underground car park
- ...

